

Welcome to the Transition Lounge

On the day your child is discharged from hospital he or she may be transferred to the Transition Lounge. The Lounge aims to provide a comfortable, safe and relaxing environment while you await a family member to take you home. During your time here, a health care assistant will be available to assist you with all your needs.

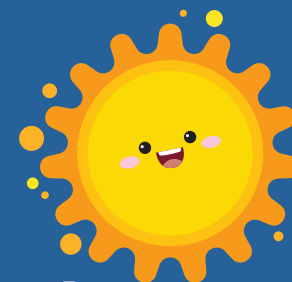


Questions you have before you leave the hospital

| |
|--|
| |
| |
| |
| |
| |
| |
| |
| |
| |
| |
| |

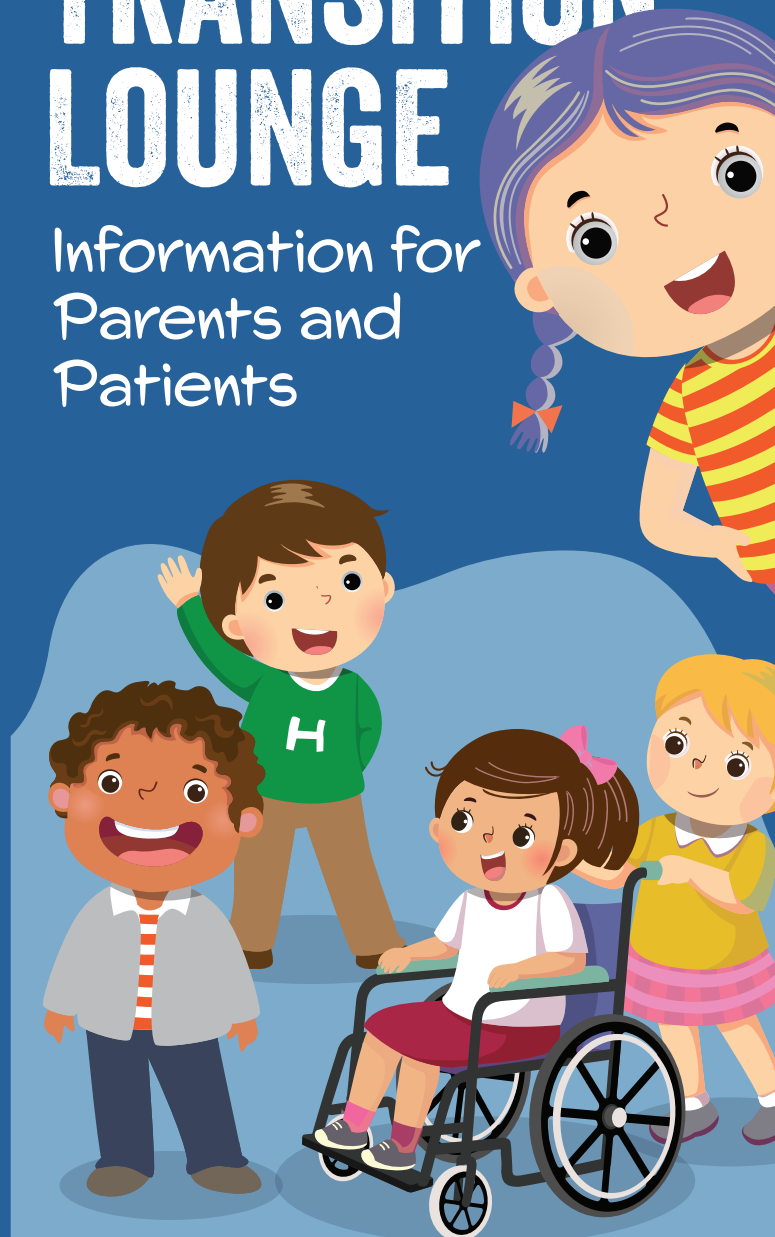
Developed by Tara Keogh, CNM3, Bed Manager
Date issued: October 2020
Date of review: October 2023

Disclaimer & Copyright ©2020, Children's Health Ireland at Crumlin, Dublin 12. All rights reserved. No part of this publication may be reproduced, stored in a retrieval system or transmitted in any form or by any means without the prior written permission of the copyright holder. Every effort has been made to ensure that the information provided is accurate and in accord with standards accepted at the time of printing.



TRANSITION LOUNGE

Information for Parents and Patients



Why do you need to come to the Transition Lounge?

Your child no longer requires medical care in the hospital and has now been discharged by the medical team. However, if you are unable to leave the hospital because you are awaiting a family member to collect you, you will be transferred to the Transition Lounge.

By waiting in the Lounge, you are helping to free up hospital beds and therefore ensuring all our patients can be admitted as soon as possible.



Facilities:

Toilet and changing facilities are available adjacent to the Transition Lounge.

The Lounge can also provide limited catering for patients.



What arrangements do you need to make when you are discharged by your medical team?

Have your transport organised (family, friend, taxi). Hospital transport can only be arranged if you have a clinical need and must be booked in advance of your discharge.

Inform the person who is collecting you that you will be discharged from the Transition Lounge and not the ward (located beside the main entrance of the hospital).

Be ready to move to the Transition Lounge at 11 am.

What will happen when you are ready for transfer to the Transition Lounge?

The ward nurse will give you details of any medications, appointments, prescriptions etc. prior to your transfer.

You will be collected from the ward and transferred to the Lounge by a member of staff.

When your transport arrives, your driver can collect you at the set down area outside the Lounge entrance.

