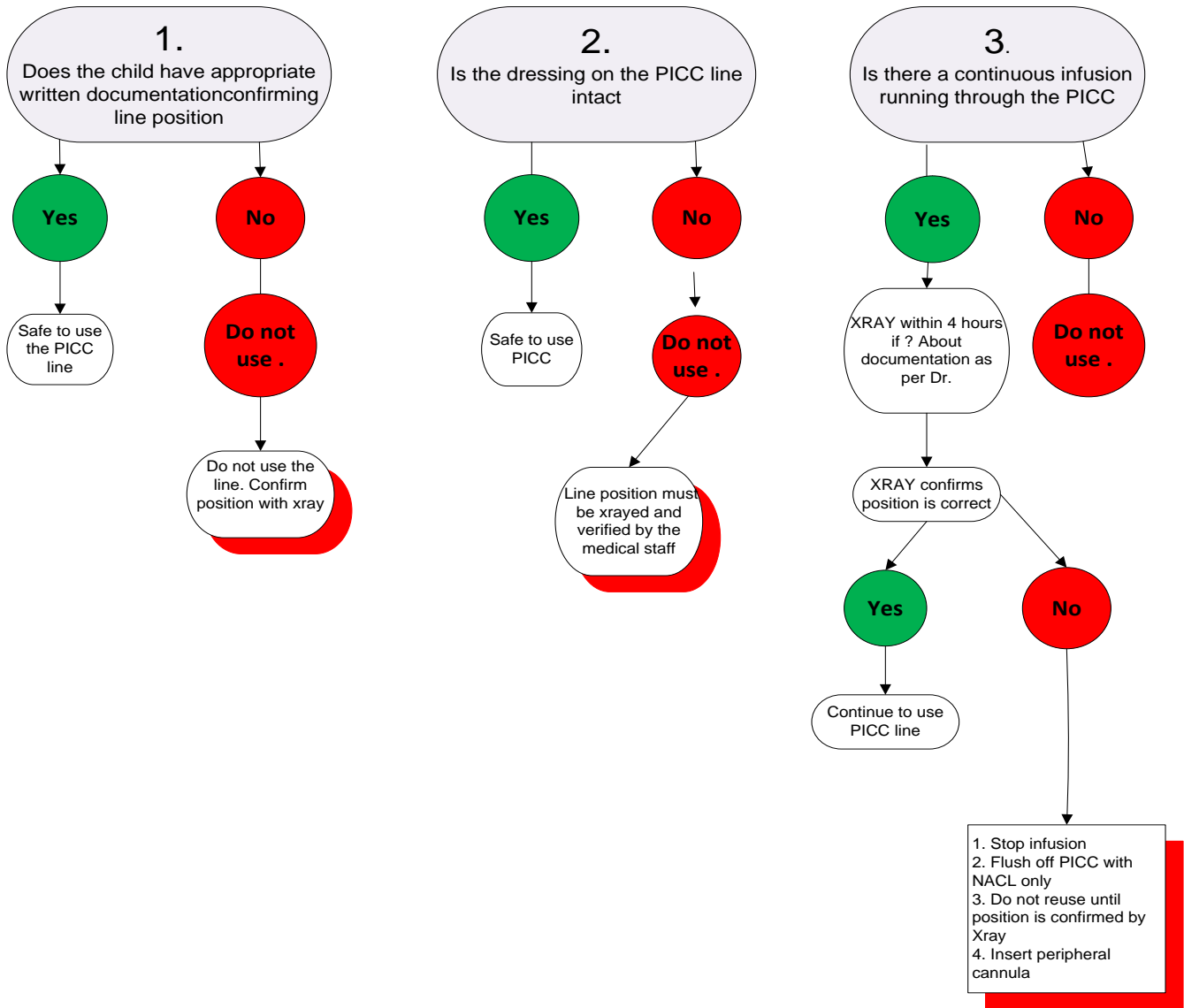


Child transferred to OLCHC with a Peripherally Inserted Central Catheter in situ

Please ensure that yes is answered to all 3 questions below prior to proceeding with line use.



Appropriate documentation required

1. Site and date of PICC insertion in post operative note
2. Size of PICC line
3. Position of tip of PICC line
4. XRAY within the last two weeks confirming the PICC line position

Note: An xray within the last 2 weeks can be viewed on NIMIS